

177. 16/9/2007 10:32:00 AM

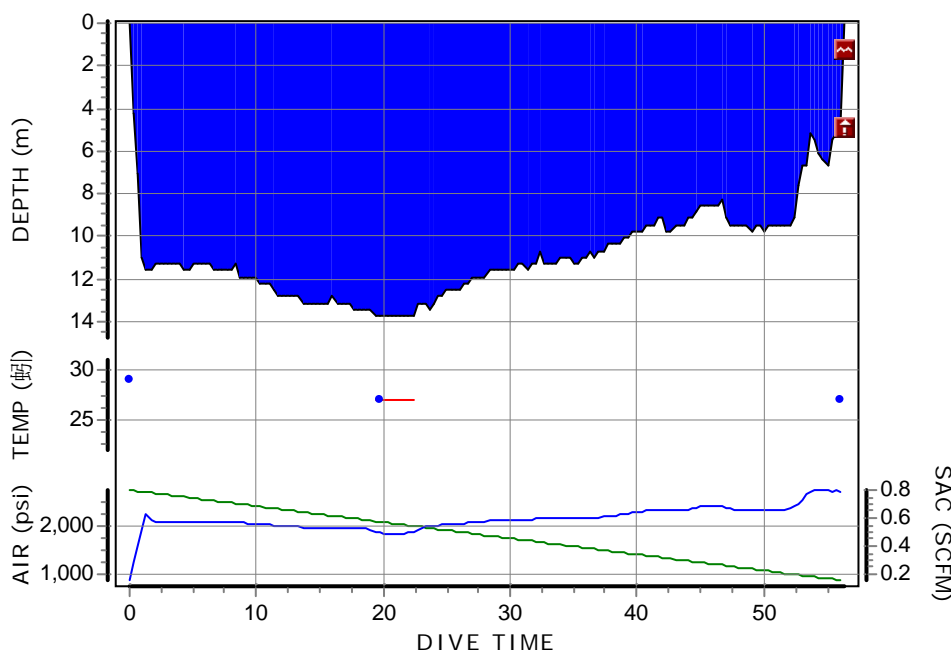
Hong Kong

Nine Pin Islands

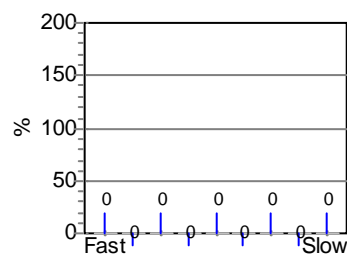
Information from dive computer

Other information

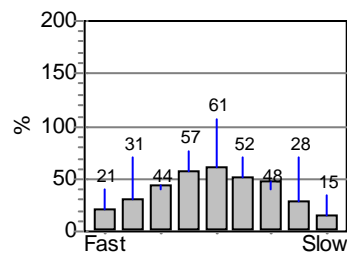
Dive no.	177	Weather	Hazy	Dive manually added	No
Start time	16/9/2007 10:32:00 AM	Visibility	2 metre	Tissue pressures invalid	No
End time	16/9/2007 11:28:20 AM	Weight used	12 lbs	Cylinder size	15 liters
Dive time	00:56.20	Temperatures		Working pressure	2999 psi
Max depth	13.7 m	Start of dive	29 °C	Cylinder pressure	
DC Dive no.	1	Max depth	27 °C	Start	2799 psi
Surface Interval	00:00.00	End of dive	27 °C	End	850 psi
ID no.	1350695	Buddy	Ah Yin	Average depth	10.9 m
Personal info	H. M. Lai	Boat name	Ocean Sky	SAC Rate	0.5 SCFM
Model	Mosquito	Dive Master		Air used	
Sampling Rate	20 sec	Custom 1	Photography	Pressure used	1949 psi
Altitude mode	A0	Custom 2	Day	Rate used	34.6 psi/min
Personal settings	P0	Custom 3	Nikonos V	Volume gas used	69.2 cu ft
Dive type	Air	Custom 4			
Alarms Recorded	2	Custom 5			
Oxygen Percent		Dive gear			
OLF					



Tissue saturation on start



Tissue saturation on end



Notes

178. 16/9/2007 01:49:00 PM

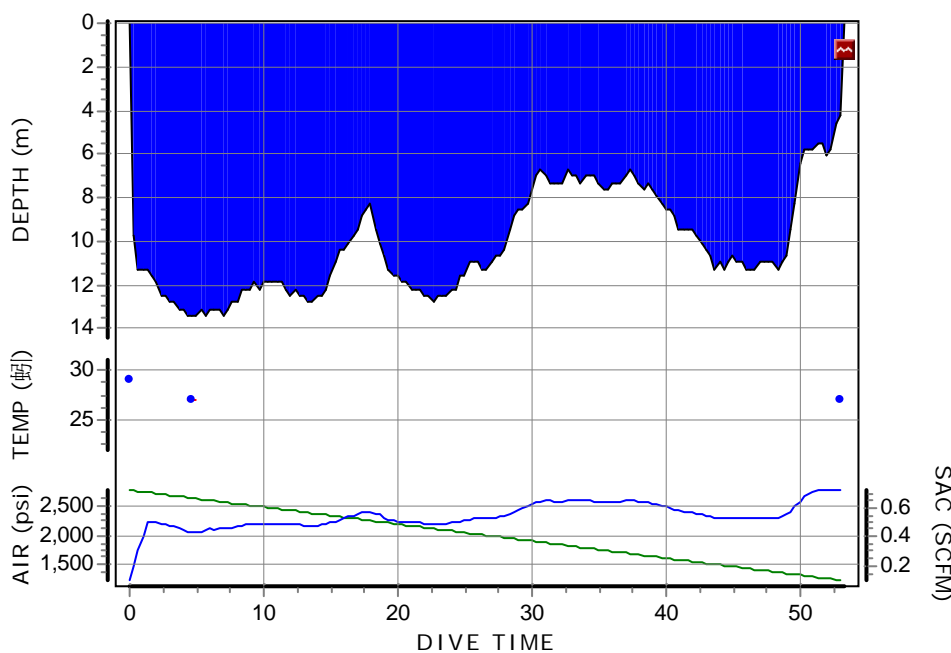
Hong Kong

Trio Island

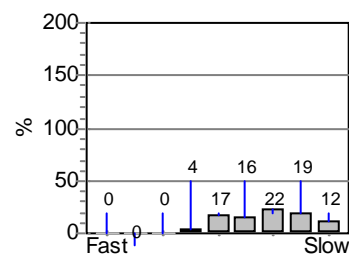
Information from dive computer

Other information

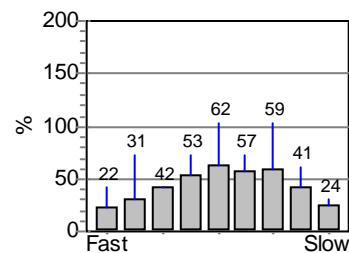
Dive no.	178	Weather	Hazy	Dive manually added	No
Start time	16/9/2007 01:49:00 PM	Visibility	2 metre	Tissue pressures invalid	No
End time	16/9/2007 02:42:20 PM	Weight used	12 lbs	Cylinder size	15 liters
Dive time	00:53.20	Temperatures		Working pressure	2999 psi
Max depth	13.4 m	Start of dive	29 °C	Cylinder pressure	
DC Dive no.	2	Max depth	27 °C	Start	2799 psi
Surface Interval	02:19.00	End of dive	27 °C	End	1199 psi
ID no.	1350695	Buddy	Ah Yin	Average depth	10.1 m
Personal info	H. M. Lai	Boat name	Ocean Sky	SAC Rate	0.5 SCFM
Model	Mosquito	Dive Master		Air used	
Sampling Rate	20 sec	Custom 1	Photography	Pressure used	1600 psi
Altitude mode	AO	Custom 2	Day	Rate used	30 psi/min
Personal settings	PO	Custom 3	Nikonos V	Volume gas used	56.8 cu ft
Dive type	Air	Custom 4			
Alarms Recorded	1	Custom 5			
Oxygen Percent		Dive gear			
OLF					



Tissue saturation on start



Tissue saturation on end



Notes