

173. 17/6/2007 10:51:00 AM

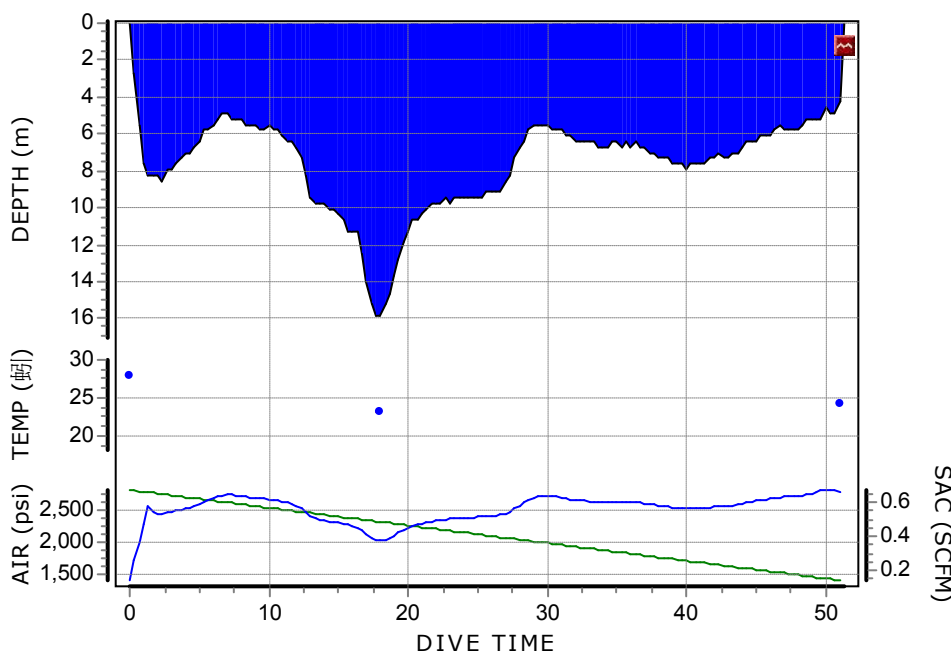
Hong Kong

Tsim Chau

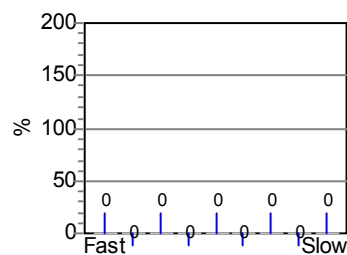
Information from dive computer

Other information

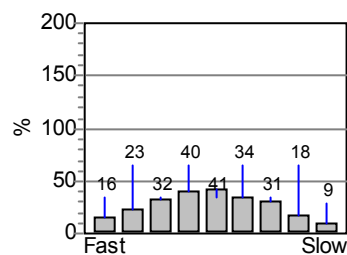
|                   |                              |               |                  |                          |                     |
|-------------------|------------------------------|---------------|------------------|--------------------------|---------------------|
| Dive no.          | <b>173</b>                   | Weather       | <b>Cloudy</b>    | Dive manually added      | <b>No</b>           |
| Start time        | <b>17/6/2007 10:51:00 AM</b> | Visibility    | <b>4 metre</b>   | Tissue pressures invalid | <b>No</b>           |
| End time          | <b>17/6/2007 11:42:20 AM</b> | Weight used   | <b>12 lbs</b>    | Cylinder size            | <b>15 liters</b>    |
| Dive time         | <b>00:51.20</b>              | Temperatures  |                  | Working pressure         | <b>3000 psi</b>     |
| Max depth         | <b>15.8 m</b>                | Start of dive | <b>28 °C</b>     | Cylinder pressure        |                     |
| DC Dive no.       | <b>1</b>                     | Max depth     | <b>23 °C</b>     | Start                    | <b>2800 psi</b>     |
| Surface Interval  | <b>00:00.00</b>              | End of dive   | <b>24 °C</b>     | End                      | <b>1400 psi</b>     |
| ID no.            | <b>1350695</b>               | Buddy         | <b>Terence</b>   | Average depth            | <b>7.6 m</b>        |
| Personal info     | <b>H. M. Lai</b>             | Boat name     | <b>Ocean Sky</b> | SAC Rate                 | <b>0.5 SCFM</b>     |
| Model             | <b>Mosquito</b>              | Dive Master   |                  | Air used                 |                     |
| Sampling Rate     | <b>20 sec</b>                | Custom 1      |                  | Pressure used            | <b>1400 psi</b>     |
| Altitude mode     | <b>A0</b>                    | Custom 2      |                  | Rate used                | <b>27.3 psi/min</b> |
| Personal settings | <b>P0</b>                    | Custom 3      |                  | Volume gas used          | <b>49.7 cu ft</b>   |
| Dive type         | <b>Air</b>                   | Custom 4      |                  |                          |                     |
| Alarms Recorded   | <b>1</b>                     | Custom 5      |                  |                          |                     |
| Oxygen Percent    |                              | Dive gear     | <b>Basic</b>     |                          |                     |
| OLF               |                              |               |                  |                          |                     |



Tissue saturation on start



Tissue saturation on end



Notes

174. 17/6/2007 01:45:00 PM

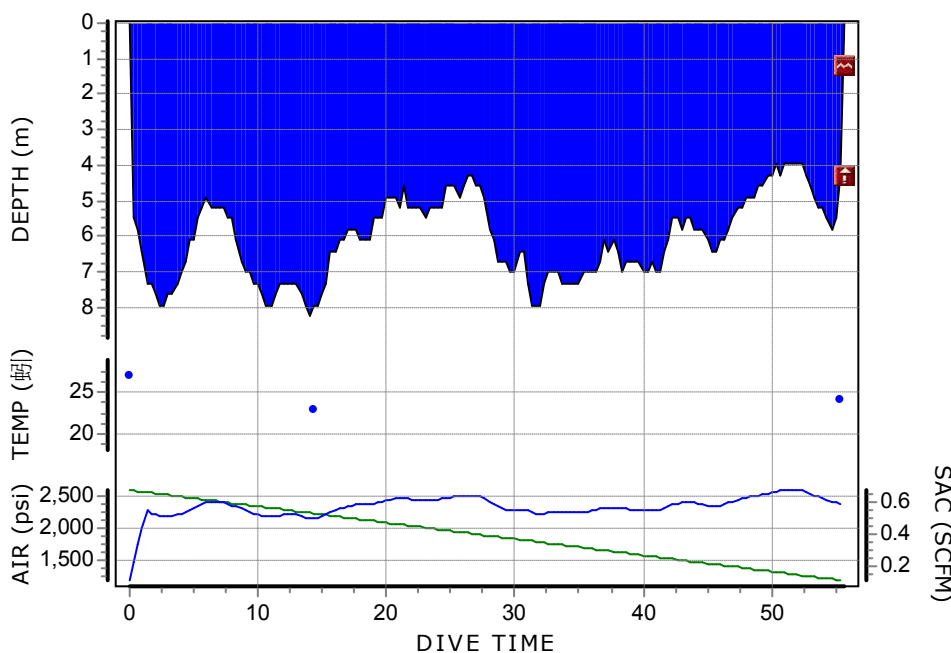
Hong Kong

Tsim Chau

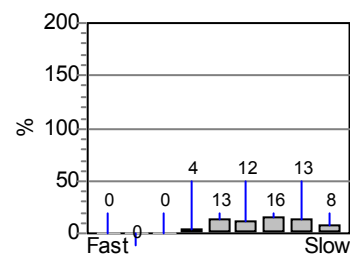
Information from dive computer

Other information

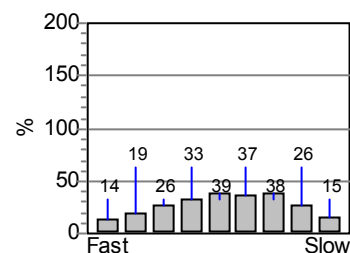
|                   |                              |               |                  |                          |                     |
|-------------------|------------------------------|---------------|------------------|--------------------------|---------------------|
| Dive no.          | <b>174</b>                   | Weather       | <b>Cloudy</b>    | Dive manually added      | <b>No</b>           |
| Start time        | <b>17/6/2007 01:45:00 PM</b> | Visibility    | <b>4 metre</b>   | Tissue pressures invalid | <b>No</b>           |
| End time          | <b>17/6/2007 02:40:40 PM</b> | Weight used   | <b>12 lbs</b>    | Cylinder size            | <b>15 liters</b>    |
| Dive time         | <b>00:55.40</b>              | Temperatures  |                  | Working pressure         | <b>3000 psi</b>     |
| Max depth         | <b>8.2 m</b>                 | Start of dive | <b>27 °C</b>     | Cylinder pressure        |                     |
| DC Dive no.       | <b>2</b>                     | Max depth     | <b>23 °C</b>     | Start                    | <b>2600 psi</b>     |
| Surface Interval  | <b>02:02.00</b>              | End of dive   | <b>24 °C</b>     | End                      | <b>1200 psi</b>     |
| ID no.            | <b>1350695</b>               | Buddy         | <b>Terence</b>   | Average depth            | <b>6 m</b>          |
| Personal info     | <b>H. M. Lai</b>             | Boat name     | <b>Ocean Sky</b> | SAC Rate                 | <b>0.5 SCFM</b>     |
| Model             | <b>Mosquito</b>              | Dive Master   |                  | Air used                 |                     |
| Sampling Rate     | <b>20 sec</b>                | Custom 1      |                  | Pressure used            | <b>1400 psi</b>     |
| Altitude mode     | <b>A0</b>                    | Custom 2      |                  | Rate used                | <b>25.1 psi/min</b> |
| Personal settings | <b>P0</b>                    | Custom 3      |                  | Volume gas used          | <b>49.7 cu ft</b>   |
| Dive type         | <b>Air</b>                   | Custom 4      |                  |                          |                     |
| Alarms Recorded   | <b>2</b>                     | Custom 5      |                  |                          |                     |
| Oxygen Percent    |                              | Dive gear     |                  |                          |                     |
| OLF               |                              |               |                  |                          |                     |



Tissue saturation on start



Tissue saturation on end



Notes