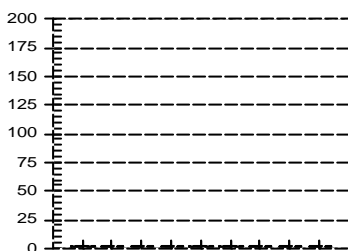
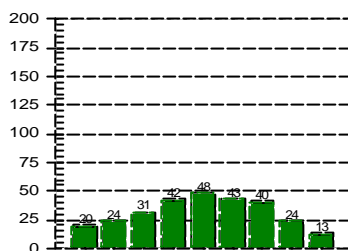


Tissue saturation percentages



at start of dive



at end of dive

Other Information

Partner **Eugene**
 Dive Master
 Dive Boat **Ocean Sky**
 Weather **Fine**
 Visibility **4 metre**
 Weight Used **6 kg**
 Air Temp. **27 ?C**
 Water Temp., Max Depth **23 ?C** End of dive **23 ?C**
 Dive Type **Photography**
 Light conditions **Day**
 Camera used **Nikonos V**
 Custom 4
 Custom 5
 Dive Gear **Basic, Nikonos V Set**

Dive No. 166 **1/ 5/2006**
 Hong Kong
 Tsim Chau

Information from dive computer

Max Depth **12.2 m**
 Dive Time **70:40**
 Date of Dive **1/ 5/2006**
 Start Time **10:57 AM**
 End Time **12:07 PM**
 DC Dive no. **1**
 Surface Interval **0:00**
 Altitude Mode **A0**
 Personal Setting **P0**
 ID no. **1350695**
 Personal Info **H. M. Lai**
 Model **Mosquito**
 Sampling Rate **20**
 Alarms Recorded
 SLOW

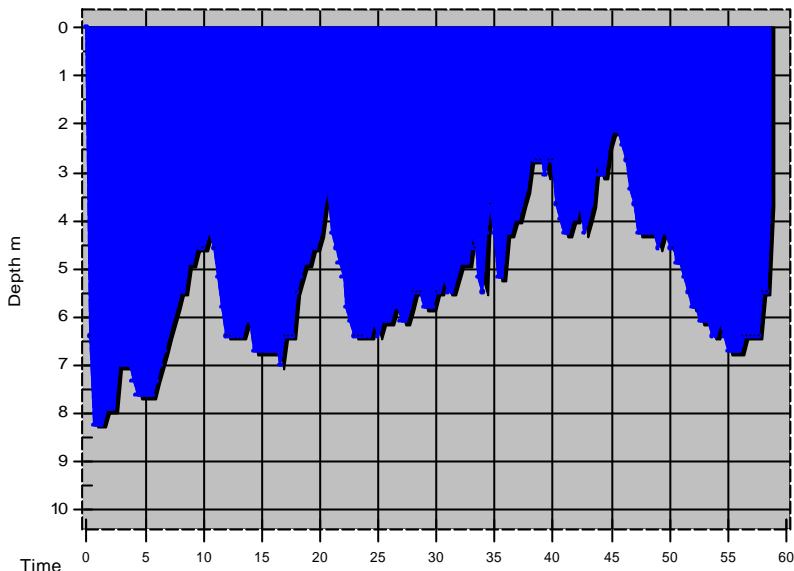
Oxygen Percent
OLF

Dive manually added
 Dive modified
 Tissue pressures invalid
 Cylinder Size **80.0 cu ft**
 Working Pressure **3000 psi**
 Cylinder Pressure
 Start **0 psi**
 End **0 psi**

Information Computed by logbook

Average Depth **7.7 m**
 Surface Air Consumption **0 SCFM**
 Air Used
 Standard Volume **0.0 cu ft**
 Pressure **0 psi**
 Pressure per min. **0 psi**

Notes

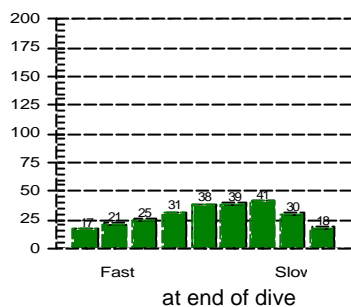
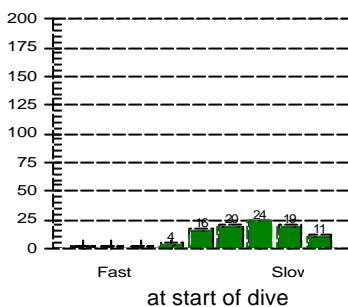


Dive No. 167 **1/ 5/2006**
 Hong Kong
 Tsim Chau

Information from dive computer

Max Depth **8.2 m**
 Dive Time **58:40**
 Date of Dive **1/ 5/2006**
 Start Time **01:41 PM**
 End Time **02:39 PM**
 DC Dive no. **2**
 Surface Interval **1:33**
 Altitude Mode **A0**
 Personal Setting **P0**
 ID no. **1350695**
 Personal Info **H. M. Lai**
 Model **Mosquito**
 Sampling Rate **20**
 Alarms Recorded

Tissue saturation percentages



Oxygen Percent
 OLF

Other Information

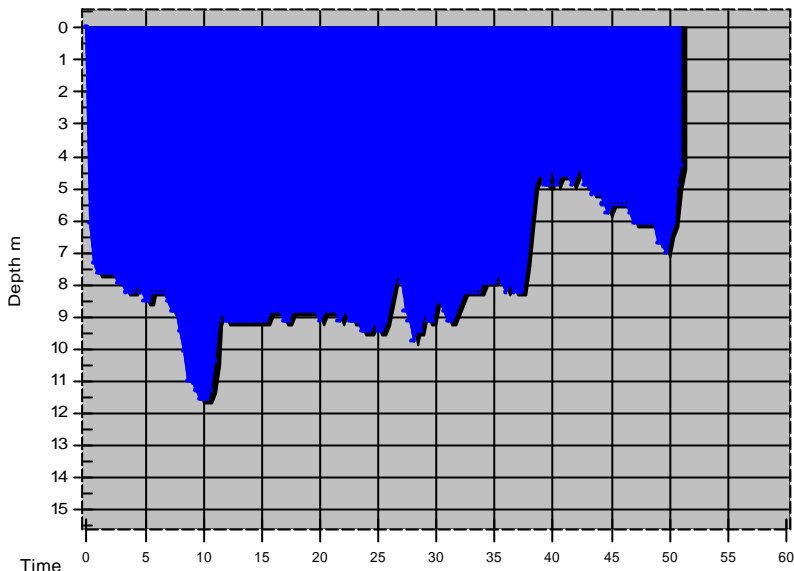
Partner **Eugene**
 Dive Master
 Dive Boat **Ocean Sky**
 Weather **Fine**
 Visibility **4 metre**
 Weight Used **6 kg**
 Air Temp. **27 ?C**
 Water Temp., Max Depth **26 ?C** End of dive **23 ?C**
 Dive Type **Photography**
 Light conditions **Day**
 Camera used **Nikonos V**
 Custom 4
 Custom 5
 Dive Gear **Basic, Nikonos V Set**

Dive manually added
 Dive modified
 Tissue pressures invalid
 Cylinder Size **80.0 cu ft**
 Working Pressure **3000 psi**
 Cylinder Pressure
 Start **3000 psi**
 End **1400 psi**

Information Computed by logbook

Average Depth **5.3 m**
 Surface Air Consumption **0.43 SCFM**
 Air Used
 Standard Volume **42.7 cu ft**
 Pressure **1600 psi**
 Pressure per min. **27 psi**

Notes

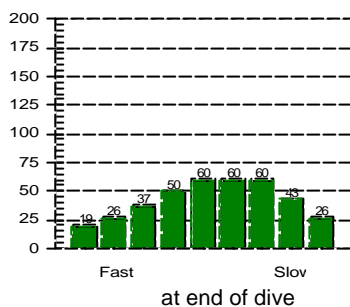
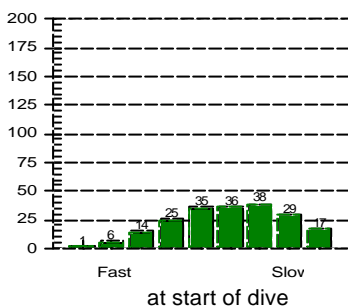


Dive No. 168 1/ 5/2006
 Hong Kong
 Tsim Chau

Information from dive computer

Max Depth **11.6 m**
 Dive Time **51:00**
 Date of Dive **1/ 5/2006**
 Start Time **03:00 PM**
 End Time **03:51 PM**
 DC Dive no. **3**
 Surface Interval **0:19**
 Altitude Mode **A0**
 Personal Setting **P0**
 ID no. **1350695**
 Personal Info **H. M. Lai**
 Model **Mosquito**
 Sampling Rate **20**
 Alarms Recorded

Tissue saturation percentages



Oxygen Percent
 OLF

Other Information

Partner **Eugene**
 Dive Master
 Dive Boat **Ocean Sky**
 Weather **Fine**
 Visibility **4 metre**
 Weight Used **6 kg**
 Air Temp. **26 ?C**
 Water Temp., Max Depth **23 ?C** End of dive **23 ?C**
 Dive Type **Photography**
 Light conditions **Day**
 Camera used **Nikonos V**
 Custom 4
 Custom 5
 Dive Gear **Basic, Nikonos V Set**

Dive manually added
 Dive modified
 Tissue pressures invalid
 Cylinder Size **80.0 cu ft**
 Working Pressure **3000 psi**
 Cylinder Pressure
 Start **3000 psi**
 End **1400 psi**

Information Computed by logbook

Average Depth **7.9 m**
 Surface Air Consumption **0.43 SCFM**
 Air Used
 Standard Volume **42.7 cu ft**
 Pressure **1600 psi**
 Pressure per min. **31 psi**

Notes