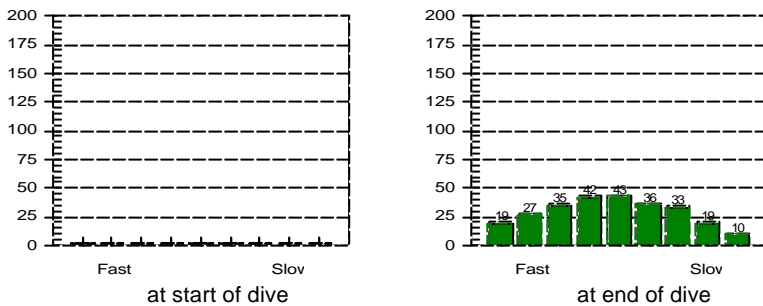


**Dive No. 164** **23/ 4/2006**  
 Hong Kong  
 Tsim Chau

Information from dive computer

Max Depth **11.6 m**  
 Dive Time **65:20**  
 Date of Dive **23/ 4/2006**  
 Start Time **10:52 AM**  
 End Time **11:57 AM**  
 DC Dive no. **1**  
 Surface Interval **0:00**  
 Altitude Mode **A0**  
 Personal Setting **P0**  
 ID no. **1350695**  
 Personal Info **H. M. Lai**  
 Model **Mosquito**  
 Sampling Rate **20**  
 Alarms Recorded

Tissue saturation percentages



Oxygen Percent  
 OLF

Other Information

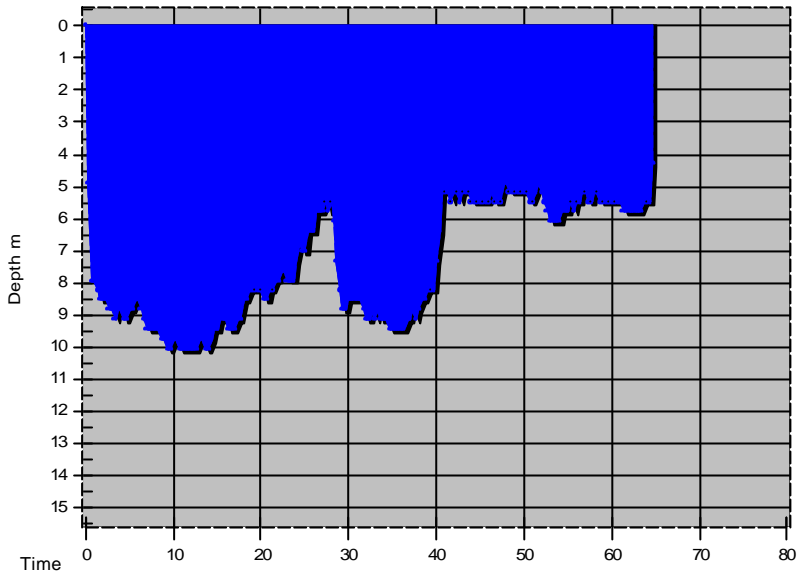
Partner **Eugene**  
 Dive Master  
 Dive Boat **Ocean Sky**  
 Weather **Cloudy**  
 Visibility **4 metre**  
 Weight Used **6 kg**  
 Air Temp. **27 ?C**  
 Water Temp., Max Depth **22 ?C** End of dive **22 ?C**  
 Dive Type **Photography**  
 Light conditions **Day**  
 Camera used **Nikonos V**  
 Custom 4  
 Custom 5  
 Dive Gear **Basic, Nikonos V Set**

Dive manually added  
 Dive modified  
 Tissue pressures invalid  
 Cylinder Size **80.0 cu ft**  
 Working Pressure **3000 psi**  
 Cylinder Pressure  
 Start **3200 psi**  
 End **1200 psi**

Information Computed by logbook

Average Depth **6.4 m**  
 Surface Air Consumption **0.46 SCFM**  
 Air Used  
 Standard Volume **53.3 cu ft**  
 Pressure **2000 psi**  
 Pressure per min. **31 psi**

Notes

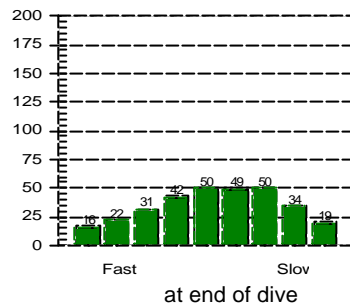
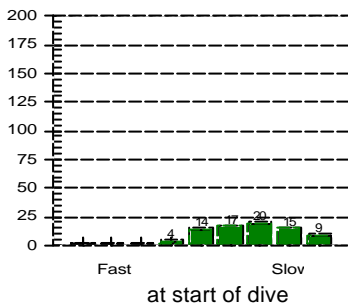


**Dive No. 165** **23/ 4/2006**  
 Hong Kong  
 Tsim Chau

**Information from dive computer**

Max Depth **10.1 m**  
 Dive Time **64:40**  
 Date of Dive **23/ 4/2006**  
 Start Time **01:32 PM**  
 End Time **02:36 PM**  
 DC Dive no. **2**  
 Surface Interval **1:34**  
 Altitude Mode **A0**  
 Personal Setting **P0**  
 ID no. **1350695**  
 Personal Info **H. M. Lai**  
 Model **Mosquito**  
 Sampling Rate **20**  
 Alarms Recorded

**Tissue saturation percentages**



Oxygen Percent  
 OLF

**Other Information**

Partner **Eugene**  
 Dive Master  
 Dive Boat **Ocean Sky**  
 Weather **Cloudy**  
 Visibility **4 metre**  
 Weight Used **6 kg**  
 Air Temp. **27 ?C**  
 Water Temp., Max Depth **23 ?C** End of dive **22 ?C**  
 Dive Type **Photography**  
 Light conditions **Day**  
 Camera used **Nikonos V**  
 Custom 4  
 Custom 5  
 Dive Gear **Basic, Nikonos V Set**

Dive manually added  
 Dive modified  
 Tissue pressures invalid  
 Cylinder Size **80.0 cu ft**  
 Working Pressure **3000 psi**  
 Cylinder Pressure  
 Start **3000 psi**  
 End **900 psi**

**Information Computed by logbook**

Average Depth **7.4 m**  
 Surface Air Consumption **0.46 SCFM**  
 Air Used  
 Standard Volume **56.0 cu ft**  
 Pressure **2100 psi**  
 Pressure per min. **32 psi**

Notes