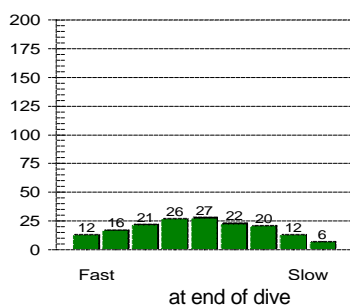
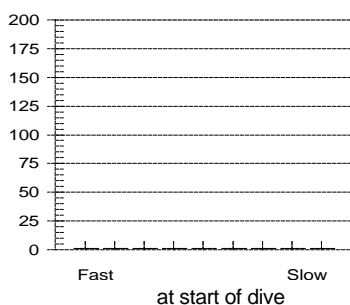


Tissue saturation percentages



Other Information

Partner **Ah Keung**
 Dive Master
 Dive Boat **Ocean Sky**
 Weather **Fine**
 Visibility **1 metre**
 Weight Used **6 kg**
 Air Temp. **30 ?C**
 Water Temp., Max Depth **28 ?C** End of dive **28 ?C**
 Dive Type **Photography**
 Light conditions **Day**
 Camera used **Nikonos V**
 Custom 4
 Custom 5
 Dive Gear **Basic, Nikonos V Set**

Dive No. 161 **3/ 7/2005**
 Hong Kong
 Tsim Chau

Information from dive computer

Max Depth **7.6 m**
 Dive Time **47:00**
 Date of Dive **3/ 7/2005**
 Start Time **11:39 AM**
 End Time **12:26 PM**
 DC Dive no. **1**
 Surface Interval **0:00**
 Altitude Mode **A0**
 Personal Setting **P0**
 ID no. **1350695**
 Personal Info **H. M. Lai**
 Model **Mosquito**
 Sampling Rate **20**
 Alarms Recorded

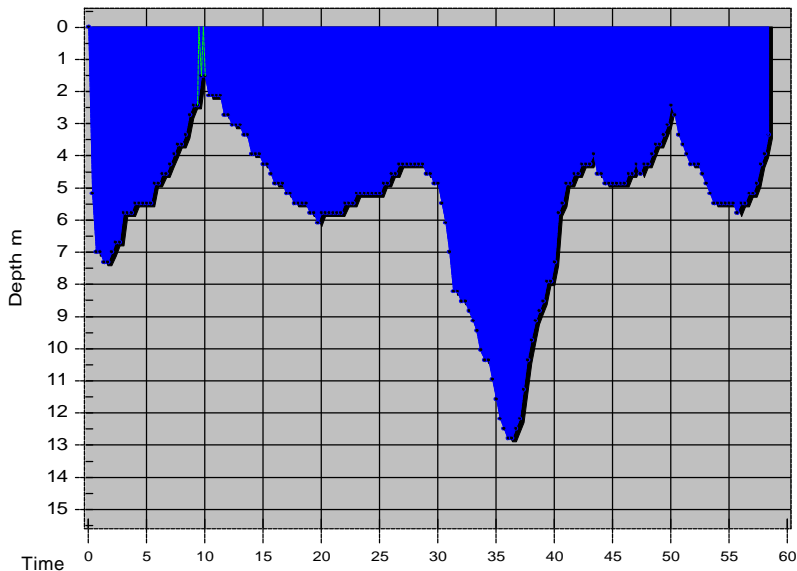
Oxygen Percent
OLF

Dive manually added
 Dive modified
 Tissue pressures invalid
 Cylinder Size **80.0 cu ft**
 Working Pressure **3000 psi**
 Cylinder Pressure
 Start **0 psi**
 End **0 psi**

Information Computed by logbook

Average Depth **5.3 m**
 Surface Air Consumption **0 SCFM**
 Air Used
 Standard Volume **0.0 cu ft**
 Pressure **0 psi**
 Pressure per min. **0 psi**

Notes **Very Milky Water**

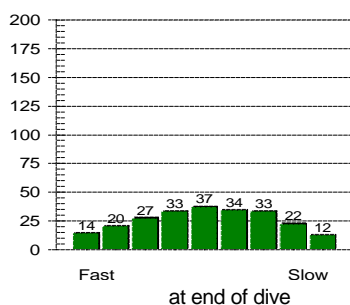
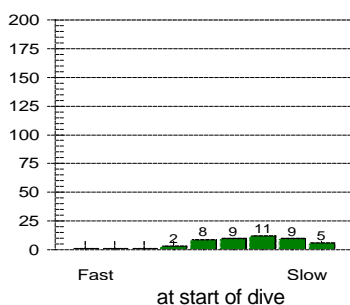


Dive No. 162 **3/ 7/2005**
 Hong Kong
 Tsim Chau

Information from dive computer

Max Depth **12.8 m**
 Dive Time **58:20**
 Date of Dive **3/ 7/2005**
 Start Time **2:10 PM**
 End Time **3:08 PM**
 DC Dive no. **2**
 Surface Interval **1:44**
 Altitude Mode **A0**
 Personal Setting **P0**
 ID no. **1350695**
 Personal Info **H. M. Lai**
 Model **Mosquito**
 Sampling Rate **20**
 Alarms Recorded

Tissue saturation percentages



Oxygen Percent
 OLF

Other Information

Partner **Ah Keung**
 Dive Master
 Dive Boat **Ocean Sky**
 Weather **Fine**
 Visibility **1 metre**
 Weight Used **6 kg**
 Air Temp. **30 ?C**
 Water Temp., Max Depth **27 ?C** End of dive **29 ?C**
 Dive Type **Photography**
 Light conditions **Day**
 Camera used **Nikonos V**
 Custom 4
 Custom 5
 Dive Gear **Basic, Nikonos V Set**

Dive manually added
 Dive modified
 Tissue pressures invalid
 Cylinder Size **80.0 cu ft**
 Working Pressure **3000 psi**
 Cylinder Pressure
 Start **0 psi**
 End **0 psi**

Information Computed by logbook

Average Depth **5.5 m**
 Surface Air Consumption **0 SCFM**
 Air Used
 Standard Volume **0.0 cu ft**
 Pressure **0 psi**
 Pressure per min. **0 psi**

Notes **Milky Water**