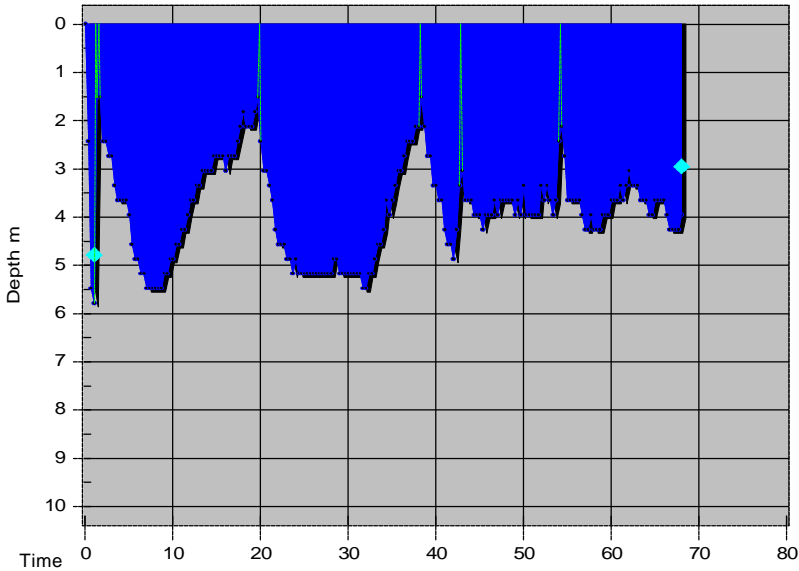


Dive No. 159 **26/ 6/2005**
 Hong Kong
 Ung Kong

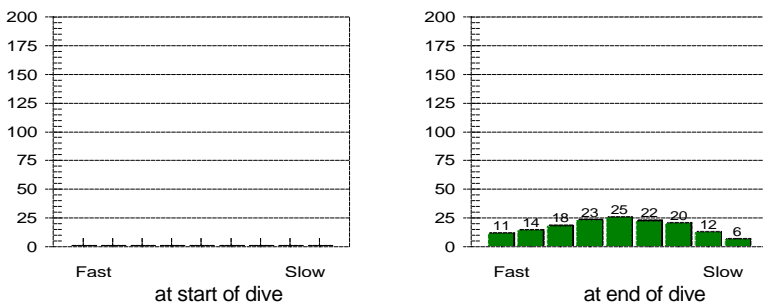


Information from dive computer

Max Depth **5.8 m**
 Dive Time **68:00**
 Date of Dive **26/ 6/2005**
 Start Time **10:34 AM**
 End Time **11:42 AM**
 DC Dive no. **1**
 Surface Interval **0:00**
 Altitude Mode **A0**
 Personal Setting **P0**
 ID no. **1350695**
 Personal Info **H. M. Lai**
 Model **Mosquito**
 Sampling Rate **20**
 Alarms Recorded **20**
 SLOW

Oxygen Percent
 OLF

Tissue saturation percentages



Other Information

Partner **Felix**
 Dive Master
 Dive Boat **Ocean Sky**
 Weather **Fine**
 Visibility **2 metre**
 Weight Used **6 kg**
 Air Temp. **29 ?C**
 Water Temp., Max Depth **28 ?C** End of dive **25 ?C**
 Dive Type **Photography**
 Light conditions **Day**
 Camera used **Nikonos V**
 Custom 4
 Custom 5
 Dive Gear **Basic, Nikonos V Set**

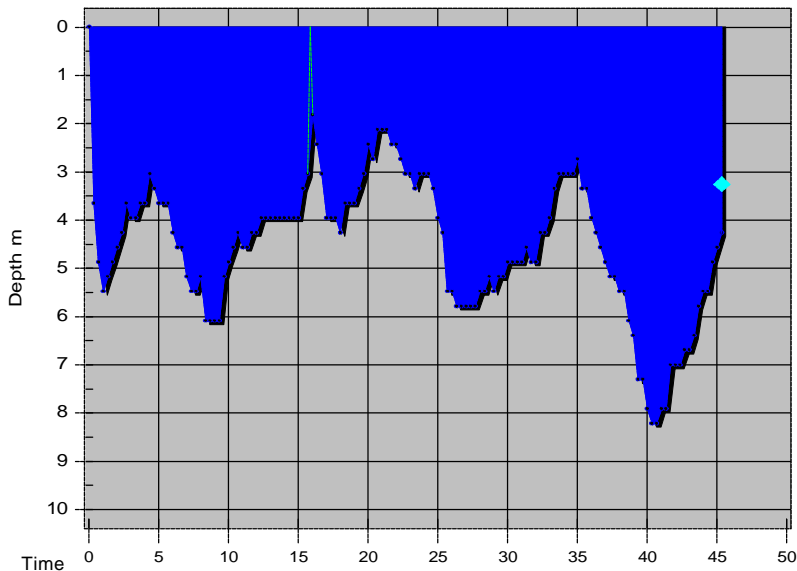
Dive manually added
 Dive modified
 Tissue pressures invalid

Cylinder Size **80.0 cu ft**
 Working Pressure **3000 psi**
 Cylinder Pressure
 Start **0 psi**
 End **0 psi**

Information Computed by logbook

Average Depth **3.9 m**
 Surface Air Consumption **0 SCFM**
 Air Used
 Standard Volume **0.0 cu ft**
 Pressure **0 psi**
 Pressure per min. **0 psi**

Notes **Donation to Uncle Sing Fund**



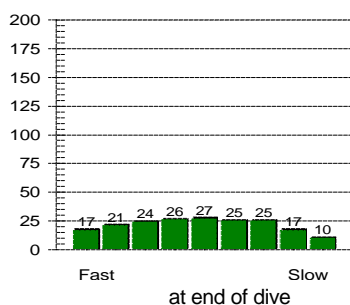
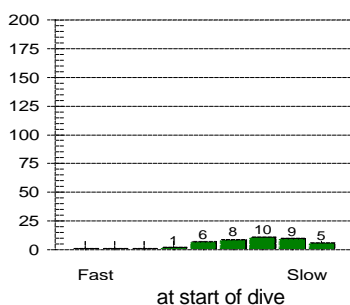
Dive No. 160 **26/ 6/2005**
 Hong Kong
 Dong Wan

Information from dive computer

Max Depth **8.2 m**
 Dive Time **45:20**
 Date of Dive **26/ 6/2005**
 Start Time **1:57 PM**
 End Time **2:42 PM**
 DC Dive no. **2**
 Surface Interval **1:57**
 Altitude Mode **A0**
 Personal Setting **P0**
 ID no. **1350695**
 Personal Info **H. M. Lai**
 Model **Mosquito**
 Sampling Rate **20**
 Alarms Recorded **20**
 SLOW

Oxygen Percent
 OLF

Tissue saturation percentages



Other Information

Partner **Terence**
 Dive Master
 Dive Boat **Ocean Sky**
 Weather **Fair**
 Visibility **2 metre**
 Weight Used **6 kg**
 Air Temp. **28 ?C**
 Water Temp., Max Depth **24 ?C** End of dive **24 ?C**
 Dive Type **Photography**
 Light conditions **Day**
 Camera used **Nikonos V**
 Custom 4
 Custom 5
 Dive Gear **Basic, Nikonos V Set**

Dive manually added
 Dive modified
 Tissue pressures invalid
 Cylinder Size **80.0 cu ft**
 Working Pressure **3000 psi**
 Cylinder Pressure
 Start **3000 psi**
 End **1800 psi**

Information Computed by logbook

Average Depth **4.5 m**
 Surface Air Consumption **0.45 SCFM**
 Air Used
 Standard Volume **32.0 cu ft**
 Pressure **1200 psi**
 Pressure per min. **26 psi**

Notes **Charity Donation Dive to Uncle Sing Fund**