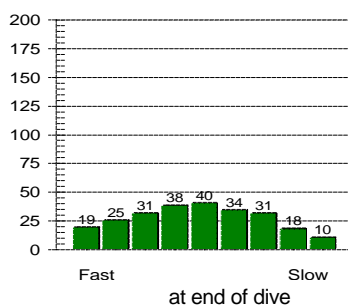
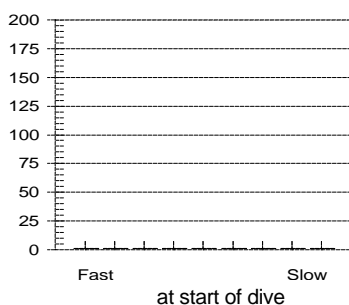


Tissue saturation percentages



Other Information

Partner **Ah Leung**
 Dive Master
 Dive Boat **Ocean Sky**
 Weather **Fine**
 Visibility **6 metre**
 Weight Used **6 kg**
 Air Temp. **29 ?C**
 Water Temp., Max Depth **27 ?C** End of dive **27 ?C**
 Dive Type **Photography**
 Light conditions **Day**
 Camera used **Nikonos V**
 Custom 4
 Custom 5
 Dive Gear **Basic, Nikonos V Set**

Dive No. 157 **12/ 6/2005**
 Hong Kong
 Tsim Chau

Information from dive computer

Max Depth **9.1 m**
 Dive Time **62:40**
 Date of Dive **12/ 6/2005**
 Start Time **10:53 AM**
 End Time **11:55 AM**
 DC Dive no. **1**
 Surface Interval **0:00**
 Altitude Mode **A0**
 Personal Setting **P0**
 ID no. **1350695**
 Personal Info **H. M. Lai**
 Model **Mosquito**
 Sampling Rate **20**
 Alarms Recorded **20**
 SLOW

Oxygen Percent
 OLF

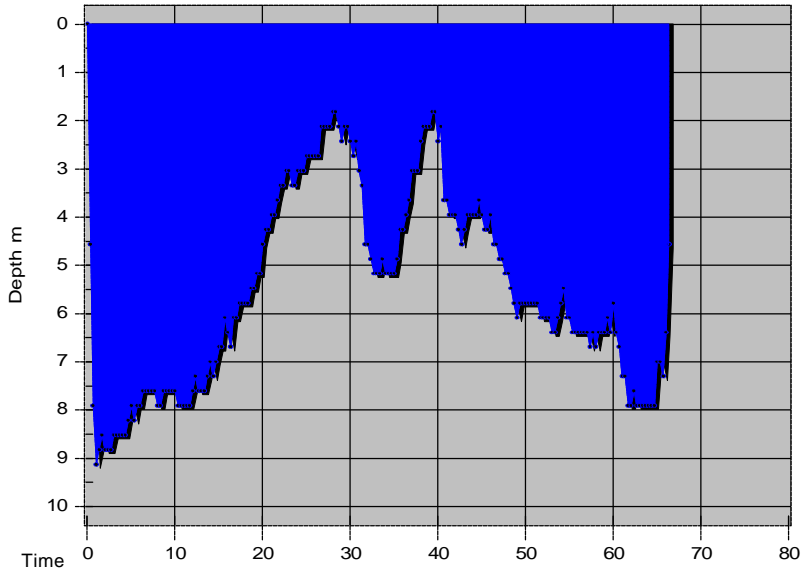
Dive manually added
 Dive modified
 Tissue pressures invalid
 Cylinder Size **80.0 cu ft**
 Working Pressure **3000 psi**
 Cylinder Pressure
 Start **3000 psi**
 End **1300 psi**

Information Computed by logbook

Average Depth **6.4 m**
 Surface Air Consumption **0.4 SCFM**
 Air Used
 Standard Volume **45.3 cu ft**
 Pressure **1700 psi**
 Pressure per min. **27 psi**

Notes **New Nikonos 15/2.8**

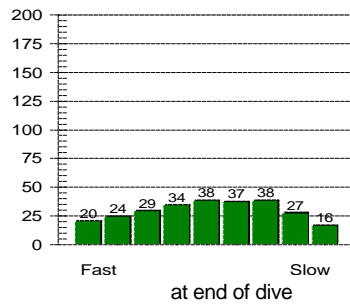
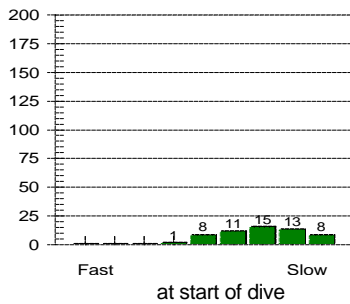
Dive No. 158 **12/ 6/2005**
 Hong Kong
 Tsim Chau



Information from dive computer

Max Depth **9.1 m**
 Dive Time **66:20**
 Date of Dive **12/ 6/2005**
 Start Time **2:09 PM**
 End Time **3:15 PM**
 DC Dive no. **2**
 Surface Interval **2:13**
 Altitude Mode **A0**
 Personal Setting **P0**
 ID no. **1350695**
 Personal Info **H. M. Lai**
 Model **Mosquito**
 Sampling Rate **20**
 Alarms Recorded

Tissue saturation percentages



Oxygen Percent
 OLF

Other Information

Partner **Ah Leung**
 Dive Master
 Dive Boat **Ocean Sky**
 Weather **Fine**
 Visibility **5 metre**
 Weight Used **6 kg**
 Air Temp. **30 ?C**
 Water Temp., Max Depth **30 ?C** End of dive **27 ?C**
 Dive Type **Photography**
 Light conditions **Day**
 Camera used **Nikonos V**
 Custom 4
 Custom 5
 Dive Gear **Basic, Nikonos V Set**

Dive manually added
 Dive modified
 Tissue pressures invalid

Cylinder Size **80.0 cu ft**
 Working Pressure **3000 psi**
 Cylinder Pressure
 Start **0 psi**
 End **0 psi**

Information Computed by logbook

Average Depth **5.5 m**
 Surface Air Consumption **0 SCFM**
 Air Used
 Standard Volume **0.0 cu ft**
 Pressure **0 psi**
 Pressure per min. **0 psi**

Notes