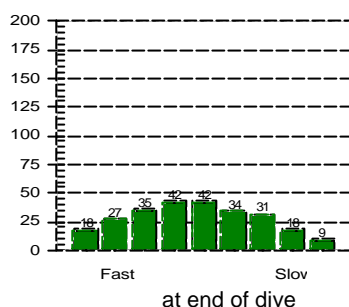
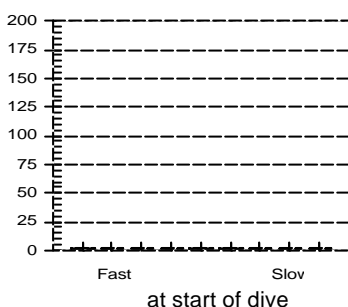


Tissue saturation percentages



Dive No. 155 **8/ 5/2005**
 Hong Kong
 Tsim Chau

Information from dive computer

Max Depth **9.4 m**
 Dive Time **59:00**
 Date of Dive **8/ 5/2005**
 Start Time **11:16 AM**
 End Time **12:15 PM**
 DC Dive no. **1**
 Surface Interval **0:00**
 Altitude Mode **A0**
 Personal Setting **P0**
 ID no. **1350695**
 Personal Info **H. M. Lai**
 Model **Mosquito**
 Sampling Rate **20**
 Alarms Recorded

Oxygen Percent
 OLF

Other Information

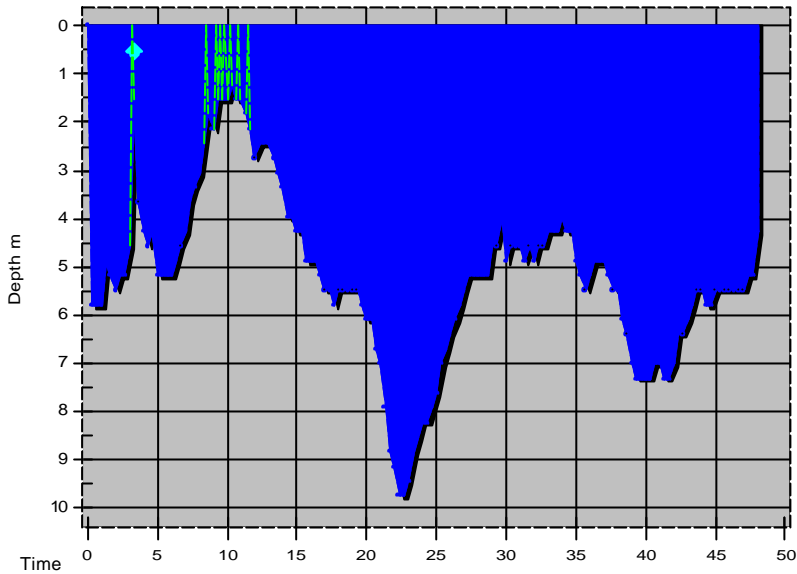
Partner **Ah Yip**
 Dive Master
 Dive Boat **Ocean Sky**
 Weather **Thunderstorm**
 Visibility **4 metre**
 Weight Used **6 kg**
 Air Temp. **24 ?C**
 Water Temp., Max Depth **23 ?C** End of dive **24 ?C**
 Dive Type **Photography**
 Light conditions **Day**
 Camera used **Nikonos V**
 Custom 4
 Custom 5
 Dive Gear **Basic, Nikonos V Set**

Dive manually added
 Dive modified
 Tissue pressures invalid
 Cylinder Size **80.0 cu ft**
 Working Pressure **3000 psi**
 Cylinder Pressure
 Start **3000 psi**
 End **1300 psi**

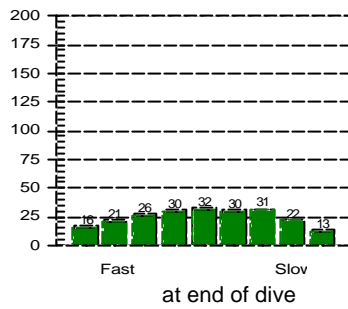
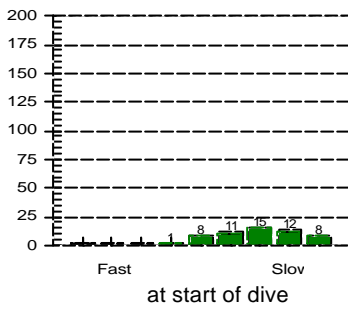
Information Computed by logbook

Average Depth **6.5 m**
 Surface Air Consumption **0.43 SCFM**
 Air Used
 Standard Volume **45.3 cu ft**
 Pressure **1700 psi**
 Pressure per min. **29 psi**

Notes



Tissue saturation percentages



Dive No. 156 **8/ 5/2005**
 Hong Kong
 Tsim Chau

Information from dive computer

Max Depth **9.8 m**
 Dive Time **48:00**
 Date of Dive **8/ 5/2005**
 Start Time **2:32 PM**
 End Time **3:20 PM**
 DC Dive no. **2**
 Surface Interval **2:15**
 Altitude Mode **A0**
 Personal Setting **P0**
 ID no. **1350695**
 Personal Info **H. M. Lai**
 Model **Mosquito**
 Sampling Rate **20**
 Alarms Recorded **20**
 SLOW

Oxygen Percent
 OLF

Other Information

Partner **Ah Yip**
 Dive Master
 Dive Boat **Ocean Sky**
 Weather **Thunderstorm**
 Visibility **4 metre**
 Weight Used **6 kg**
 Air Temp. **24 ?C**
 Water Temp., Max Depth **24 ?C** End of dive **24 ?C**
 Dive Type **Photography**
 Light conditions **Day**
 Camera used **Nikonos V**
 Custom 4
 Custom 5
 Dive Gear **Basic, Nikonos V Set**

Dive manually added
 Dive modified
 Tissue pressures invalid
 Cylinder Size **80.0 cu ft**
 Working Pressure **3000 psi**
 Cylinder Pressure
 Start **2800 psi**
 End **1200 psi**

Information Computed by logbook

Average Depth **5.2 m**
 Surface Air Consumption **0.54 SCFM**
 Air Used
 Standard Volume **42.7 cu ft**
 Pressure **1600 psi**
 Pressure per min. **33 psi**

Notes