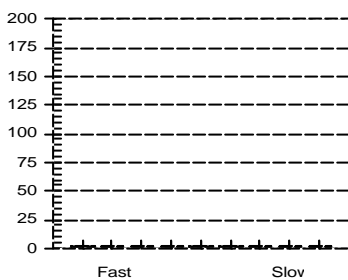
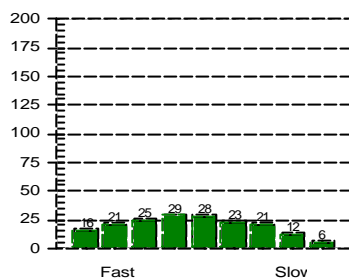


Tissue saturation percentages



at start of dive



at end of dive

Other Information

Partner  
 Dive Master  
 Dive Boat  
 Weather **Diving Adventure**  
 Visibility **Cloudy**  
 Weight Used **3 metre**  
 Air Temp. **6 kg**  
 Water Temp., Max Depth **27 ?C** End of dive **23 ?C**  
 Dive Type **Photography**  
 Light conditions **Day**  
 Camera used **Nikonos V**  
 Custom 4  
 Custom 5  
 Dive Gear **Basic, Nikonos V Set**

**Dive No. 153** **2/ 5/2005**  
 Hong Kong  
 Pak Nap

Information from dive computer

Max Depth **7.3 m**  
 Dive Time **55:40**  
 Date of Dive **2/ 5/2005**  
 Start Time **10:50 AM**  
 End Time **11:45 AM**  
 DC Dive no. **1**  
 Surface Interval **0:00**  
 Altitude Mode **A0**  
 Personal Setting **P0**  
 ID no. **1350695**  
 Personal Info **H. M. Lai**  
 Model **Mosquito**  
 Sampling Rate **20**  
 Alarms Recorded  
 SLOW

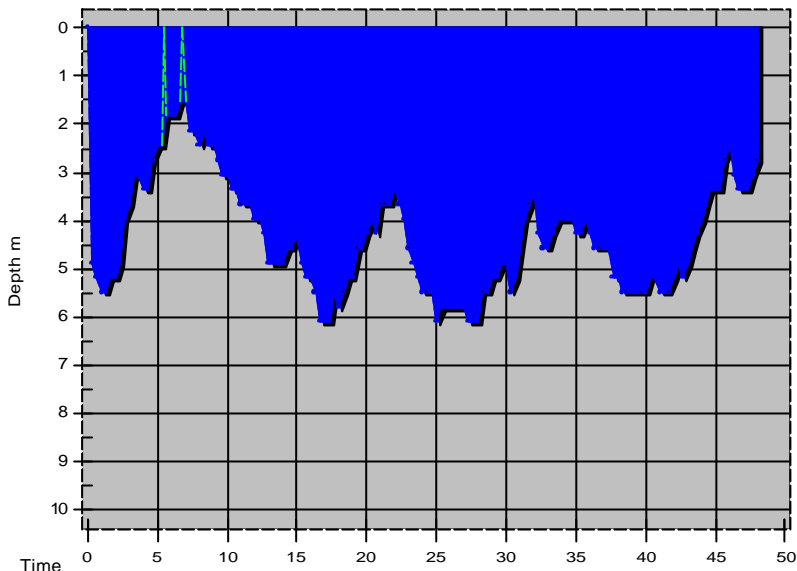
Oxygen Percent  
 OLF

Dive manually added  
 Dive modified  
 Tissue pressures invalid  
 Cylinder Size **80.0 cu ft**  
 Working Pressure **3000 psi**  
 Cylinder Pressure  
 Start **0 psi**  
 End **0 psi**

Information Computed by logbook

Average Depth **4.7 m**  
 Surface Air Consumption **0 SCFM**  
 Air Used  
 Standard Volume **0.0 cu ft**  
 Pressure **0 psi**  
 Pressure per min. **0 psi**

Notes

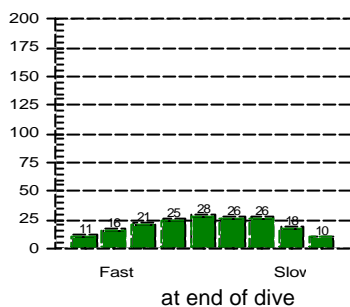
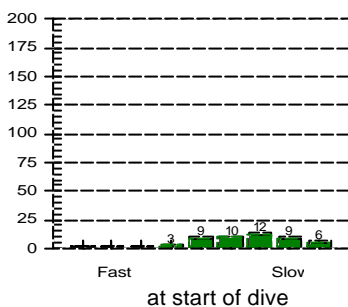


**Dive No. 154** 2/ 5/2005  
 Hong Kong  
 Pak Nap

Information from dive computer

Max Depth **6.1 m**  
 Dive Time **48:00**  
 Date of Dive **2/ 5/2005**  
 Start Time **1:27 PM**  
 End Time **2:15 PM**  
 DC Dive no. **2**  
 Surface Interval **1:40**  
 Altitude Mode **A0**  
 Personal Setting **P0**  
 ID no. **1350695**  
 Personal Info **H. M. Lai**  
 Model **Mosquito**  
 Sampling Rate **20**  
 Alarms Recorded

Tissue saturation percentages



Oxygen Percent  
 OLF

Other Information

Partner  
 Dive Master  
 Dive Boat  
 Weather **Diving Adventure**  
 Visibility **Cloudy**  
 Weight Used **3 metre**  
 Air Temp. **6 kg**  
 Water Temp., Max Depth **27 ?C** End of dive **24 ?C**  
 Dive Type **Photography**  
 Light conditions **Day**  
 Camera used **Nikonos V**  
 Custom 4  
 Custom 5  
 Dive Gear

Dive manually added  
 Dive modified  
 Tissue pressures invalid  
 Cylinder Size **80.0 cu ft**  
 Working Pressure **3000 psi**  
 Cylinder Pressure  
 Start **0 psi**  
 End **0 psi**

Information Computed by logbook

Average Depth **4.3 m**  
 Surface Air Consumption **0 SCFM**  
 Air Used  
 Standard Volume **0.0 cu ft**  
 Pressure **0 psi**  
 Pressure per min. **0 psi**

Notes