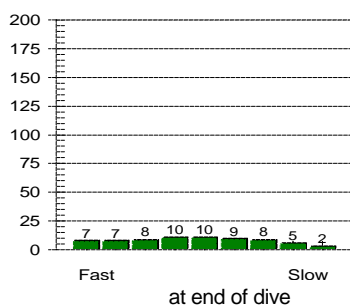
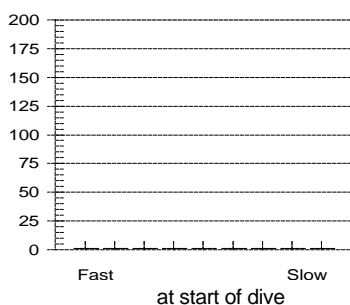


Tissue saturation percentages



Other Information

Partner **Peter**
 Dive Master
 Dive Boat **Ocean Sky**
 Weather **Cloudy**
 Visibility **4 metre**
 Weight Used **6 kg**
 Air Temp. **25 ?C**
 Water Temp., Max Depth **22 ?C** End of dive **22 ?C**
 Dive Type **Photography**
 Light conditions **Day**
 Camera used **Nikonos V**
 Custom 4
 Custom 5
 Dive Gear **Basic, Nikonos V Set**

Dive No. 151 **24/ 4/2005**
 Hong Kong
 Nine Pin Islands

Information from dive computer

Max Depth **7.6 m**
 Dive Time **50:00**
 Date of Dive **24/ 4/2005**
 Start Time **12:03 PM**
 End Time **12:53 PM**
 DC Dive no. **1**
 Surface Interval **0:00**
 Altitude Mode **A0**
 Personal Setting **P0**
 ID no. **1350695**
 Personal Info **H. M. Lai**
 Model **Mosquito**
 Sampling Rate **20**
 Alarms Recorded **SLOW**

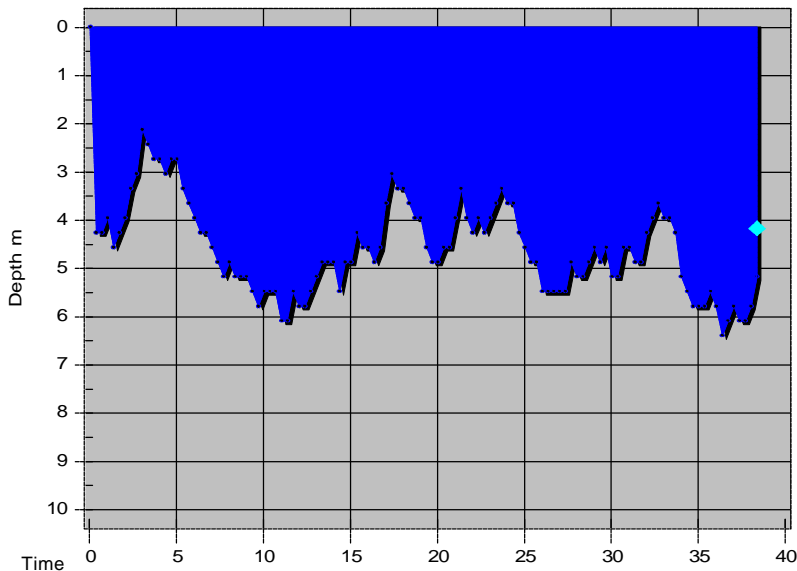
Oxygen Percent **38 %**
 OLF **6 % CNS**

Dive manually added
 Dive modified
 Tissue pressures invalid
 Cylinder Size **80.0 cu ft**
 Working Pressure **3000 psi**
 Cylinder Pressure
 Start **0 psi**
 End **0 psi**

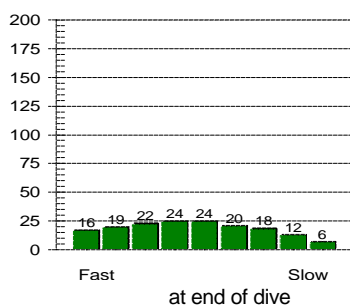
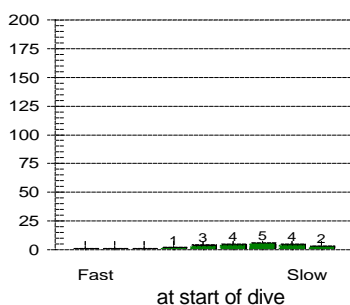
Information Computed by logbook

Average Depth **5.1 m**
 Surface Air Consumption **0 SCFM**
 Air Used
 Standard Volume **0.0 cu ft**
 Pressure **0 psi**
 Pressure per min. **0 psi**

Notes



Tissue saturation percentages



Other Information

Partner **Peter**
 Dive Master
 Dive Boat **Ocean Sky**
 Weather **Cloudy**
 Visibility **4 metre**
 Weight Used **6 kg**
 Air Temp. **24 ?C**
 Water Temp., Max Depth **22 ?C** End of dive **22 ?C**
 Dive Type **Photography**
 Light conditions **Day**
 Camera used **Nikonos V**
 Custom 4
 Custom 5
 Dive Gear **Basic, Nikonos V Set**

Dive No. 152 **24/ 4/2005**
 Hong Kong
 Nine Pin Islands

Information from dive computer

Max Depth **6.4 m**
 Dive Time **38:20**
 Date of Dive **24/ 4/2005**
 Start Time **2:35 PM**
 End Time **3:13 PM**
 DC Dive no. **2**
 Surface Interval **1:38**
 Altitude Mode **A0**
 Personal Setting **P0**
 ID no. **1350695**
 Personal Info **H. M. Lai**
 Model **Mosquito**
 Sampling Rate **20**
 Alarms Recorded **SLOW**

Oxygen Percent **21 %**
 OLF **2 % CNS**

Dive manually added
 Dive modified
 Tissue pressures invalid
 Cylinder Size **80.0 cu ft**
 Working Pressure **3000 psi**
 Cylinder Pressure
 Start **2700 psi**
 End **1800 psi**

Information Computed by logbook

Average Depth **4.6 m**
 Surface Air Consumption **0.4 SCFM**
 Air Used
 Standard Volume **24.0 cu ft**
 Pressure **900 psi**
 Pressure per min. **23 psi**

Notes