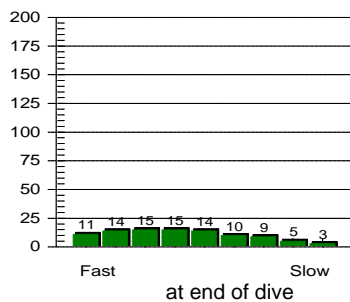
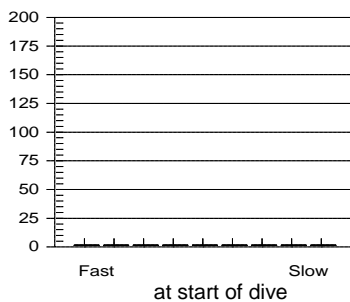


Tissue saturation percentages



Other Information

Partner **Clare Hui**
 Dive Master
 Dive Boat **Aquamarine**
 Weather **Fine**
 Visibility **2 metre**
 Weight Used **6 kg**
 Air Temp. **29 ?C**
 Water Temp., Max Depth **27 ?C** End of dive **27 ?C**
 Dive Type **Yin Yeung Diving**
 Light conditions **Day**
 Camera used **Nikonos V**
 Custom 4
 Custom 5
 Dive Gear **Basic, Nikonos V Set**

Dive No. 112 **13/ 6/2004**
 Hong Kong
 Nine Pin Islands

Information from dive computer

Max Depth **4.9 m**
 Dive Time **28:20**
 Date of Dive **13/ 6/2004**
 Start Time **11:19 AM**
 End Time **11:47 AM**
 DC Dive no. **1**
 Surface Interval **0:00**
 Altitude Mode **A0**
 Personal Setting **P0**
 ID no. **1350695**
 Personal Info **H. M. Lai**
 Model **Mosquito**
 Sampling Rate **20**
 Alarms Recorded

Oxygen Percent
 OLF

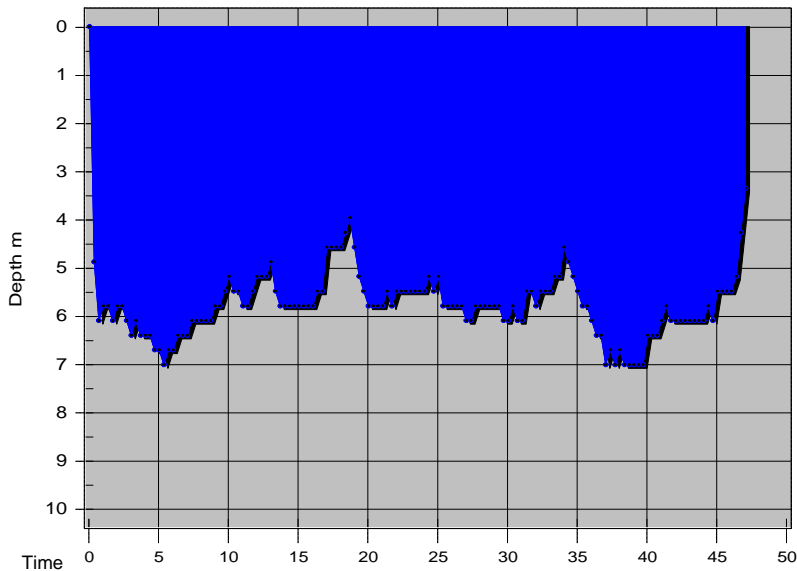
Dive manually added
 Dive modified
 Tissue pressures invalid

Cylinder Size **80.0 cu ft**
 Working Pressure **3000 psi**
 Cylinder Pressure
 Start **0 psi**
 End **0 psi**

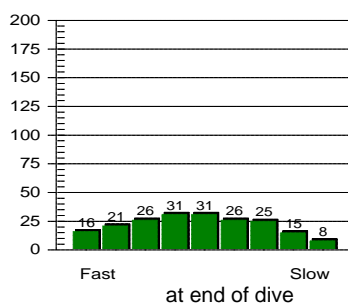
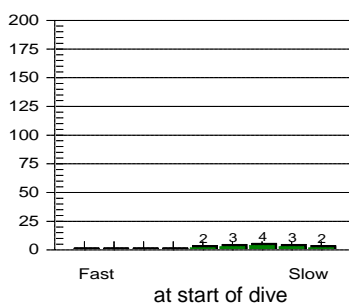
Information Computed by logbook

Average Depth **3.7 m**
 Surface Air Consumption **0 SCFM**
 Air Used
 Standard Volume **0.0 cu ft**
 Pressure **0 psi**
 Pressure per min. **0 psi**

Notes



Tissue saturation percentages



Other Information

Partner **Camiru**
 Dive Master
 Dive Boat **Aquamarine**
 Weather **Fine**
 Visibility **2 metre**
 Weight Used **6 kg**
 Air Temp. **29 ?C**
 Water Temp., Max Depth **28 ?C** End of dive **28 ?C**
 Dive Type **Photography**
 Light conditions **Day**
 Camera used **Nikonos V**
 Custom 4
 Custom 5
 Dive Gear **Basic, Nikonos V Set**

Dive No. 113 **13/ 6/2004**
 Hong Kong
 Basalt Island

Information from dive computer

Max Depth **7.0 m**
 Dive Time **47:00**
 Date of Dive **13/ 6/2004**
 Start Time **2:30 PM**
 End Time **3:17 PM**
 DC Dive no. **2**
 Surface Interval **2:42**
 Altitude Mode **A0**
 Personal Setting **P0**
 ID no. **1350695**
 Personal Info **H. M. Lai**
 Model **Mosquito**
 Sampling Rate **20**
 Alarms Recorded

Oxygen Percent
 OLF

Dive manually added
 Dive modified
 Tissue pressures invalid
 Cylinder Size **80.0 cu ft**
 Working Pressure **3000 psi**
 Cylinder Pressure
 Start **2900 psi**
 End **1200 psi**

Information Computed by logbook

Average Depth **5.8 m**
 Surface Air Consumption **0.56 SCFM**
 Air Used
 Standard Volume **45.3 cu ft**
 Pressure **1700 psi**
 Pressure per min. **36 psi**

Notes