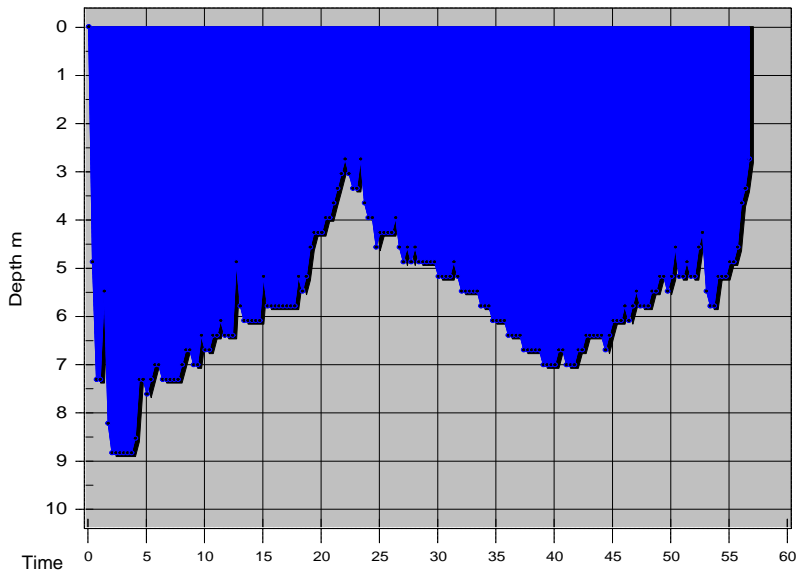


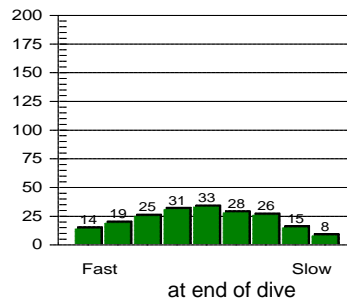
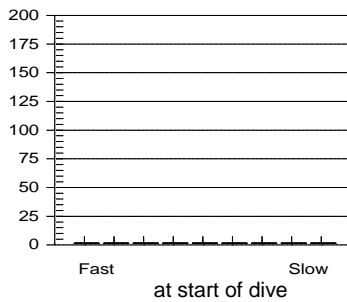
**Dive No. 105** 9/ 5/2004  
 Hong Kong  
 Tsim Chau



Information from dive computer

Max Depth **8.8 m**  
 Dive Time **56:40**  
 Date of Dive **9/ 5/2004**  
 Start Time **12:44 PM**  
 End Time **1:40 PM**  
 DC Dive no. **1**  
 Surface Interval **0:00**  
 Altitude Mode **A0**  
 Personal Setting **P0**  
 ID no. **1350695**  
 Personal Info **H. M. Lai**  
 Model **Mosquito**  
 Sampling Rate **20**  
 Alarms Recorded

**Tissue saturation percentages**



Oxygen Percent  
 OLF

**Other Information**

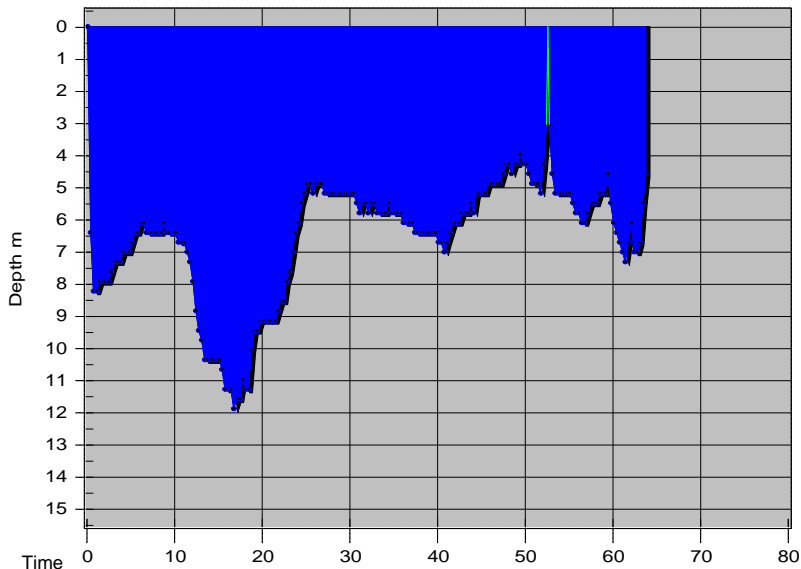
Partner **Ah Yin**  
 Dive Master  
 Dive Boat **Ocean Sky**  
 Weather **Fine**  
 Visibility **4 metre**  
 Weight Used **6 kg**  
 Air Temp. **27 ?C**  
 Water Temp., Max Depth **26 ?C** End of dive **24 ?C**  
 Dive Type **Photography**  
 Light conditions **Day**  
 Camera used **Nikonos V**  
 Custom 4  
 Custom 5  
 Dive Gear

Dive manually added  
 Dive modified  
 Tissue pressures invalid  
 Cylinder Size **80.0 cu ft**  
 Working Pressure **3000 psi**  
 Cylinder Pressure  
 Start **3000 psi**  
 End **1400 psi**

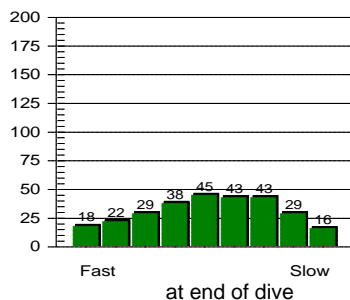
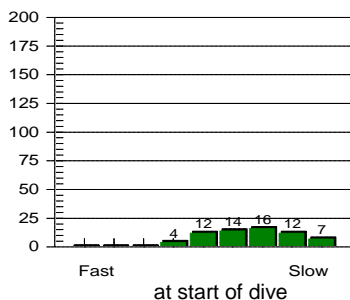
Information Computed by logbook

Average Depth **5.8 m**  
 Surface Air Consumption **0.44 SCFM**  
 Air Used  
 Standard Volume **42.7 cu ft**  
 Pressure **1600 psi**  
 Pressure per min. **28 psi**

Notes



Tissue saturation percentages



Other Information

Partner **Ah Yin**  
 Dive Master  
 Dive Boat **Ocean Sky**  
 Weather **Fine**  
 Visibility **4 metre**  
 Weight Used **6 kg**  
 Air Temp. **27 ?C**  
 Water Temp., Max Depth **24 ?C** End of dive **24 ?C**  
 Dive Type **Photography**  
 Light conditions **Day**  
 Camera used **Nikonos V**  
 Custom 4  
 Custom 5  
 Dive Gear

**Dive No. 106** **9/ 5/2004**  
 Hong Kong  
 Tsim Chau

Information from dive computer

Max Depth **11.9 m**  
 Dive Time **63:40**  
 Date of Dive **9/ 5/2004**  
 Start Time **3:09 PM**  
 End Time **4:12 PM**  
 DC Dive no. **2**  
 Surface Interval **1:28**  
 Altitude Mode **A0**  
 Personal Setting **P0**  
 ID no. **1350695**  
 Personal Info **H. M. Lai**  
 Model **Mosquito**  
 Sampling Rate **20**  
 Alarms Recorded

Oxygen Percent  
 OLF

Dive manually added  
 Dive modified  
 Tissue pressures invalid  
 Cylinder Size **80.0 cu ft**  
 Working Pressure **3000 psi**  
 Cylinder Pressure  
 Start **3000 psi**  
 End **500 psi**

Information Computed by logbook

Average Depth **6.5 m**  
 Surface Air Consumption **0.58 SCFM**  
 Air Used  
 Standard Volume **66.7 cu ft**  
 Pressure **2500 psi**  
 Pressure per min. **39 psi**

Notes